

TD-15M CRAWLER DOZERS



TIER 4 FINAL

ENGINE	TD-15M (TIER 4 FINAL)
Make and model	Cummins B 6.7
Emissions standard	Tier 4 Final
Displacement	409 in ³ (6.7l)
Bore and stroke	4.21 x 4.48 in (107 x 124 mm)
Gross horsepower, SAE J1995	232 hp (173 kW)
Net horsepower, SAE J1349/ISO 9249	213 hp (159 kW)
Rated rpm	2000
Max. torque	700 lb-ft (949 Nm) @ 1500 rpm
Air cleaner	Cummins Filtration Direct Flow™, dry type, exhaust aspiration, with dash-mounted electronic service indicator
Cold-starting aid	intake- mounted air -inlet grid heater
Slope operation, max. angle	45°

COOLING	TD-15M (TIER 4 FINAL)
Type	Suction- type variable-speed fan, hydraulically driven with perforated engine side sheets and heavy duty louvered front grill
Engine coolant rating	-34°f (-37°C)

OPERATOR STATION	TD-15M
ROPS	ROPS (ISO 3471 - 2008)
FOPS	FOPS (ISO 3449 - 2005)



UNDERCARRIAGE	TD-15M STD	TD-15M LT	TD-15M WT	TD-15M LGP
Suspension	Oscillation-type with equalizer bar & forward mounted pivot shafts	Oscillation-type with equalizer bar & forward mounted pivot shafts	Oscillation-type with equalizer bar & forward mounted pivot shafts	Oscillation-type with equalizer bar & forward mounted pivot shafts
Tracks	Large deep-heat treated, sealed and lubricated track links and through hardened, sealed and lubricated rollers for maximum wear resistance	Large deep-heat treated, sealed and lubricated track links and through hardened, sealed and lubricated rollers for maximum wear resistance	Large deep-heat treated, sealed and lubricated track links and through hardened, sealed and lubricated rollers for maximum wear resistance	Large deep-heat treated, sealed and lubricated track links and through hardened, sealed, and lubricated rollers for maximum wear resistance
Track gauge	76 in (1930 mm)	76 in (1930 mm)	80 in (2030 mm)	85 in (2160 mm)
Track shoe width	20 in (508 mm)	20 in (508 mm)	30 in (762 mm)	37 in (940 mm)
Chain	Sealed and lubricated	Sealed and lubricated	Sealed and lubricated	Sealed and lubricated
Shoes, each side	39	43	43	43
Track rollers, each side	6	8	8	8
Track length on ground	104 in (2640 mm)	120 in (3050 mm)	120 in (3050 mm)	120 in (3050 mm)
Ground contact area	4160 in ² (27000 cm ²)	4800 in ² (31000 cm ²)	7200 in ² (46000 cm ²)	8880 in ² (57000 cm ²)
Ground pressure Stage IIIA	9.4 psi (65.1 kPa)	8.4 psi (57.8 kPa)	5.7 psi (39.6 kPa)	4.7 psi (32.4 kPa)
Ground pressure Stage V	9.5 psi (65.7 kPa)	8.5 psi (58.3 kPa)	5.8 psi (40.0 kPa)	4.7 psi (32.7 kPa)
Track pitch	8 in (203.1 mm)	8 in (203.1 mm)	8 in (203.1 mm)	8 in (203.1 mm)
Sprocket sements, each side	1	1	1	1

HYDRAULICS	TD-15M (TIER 4 FINAL)
Type	Closed center load sensing hydraulic system with variable-displacement multi-piston pump
Pump flow	38.8 gpm (147 l/min)
System relief pressure	2466 psi (17 MPa)
Control	Single joystick lever
Cylinders, bore and stroke	
lift (STD)	3.94 x 48.6 in (100 x 1233.5 mm)
lift (LT, WT, LGP)	3.94 x 43.1 in (100 x 1095 mm)
tilt	5.9 x 11.7 in (150 x 297.5 mm)
tilt/pitch	5.1 x 20.5 in (130 x 520 mm)

ELECTRICAL	TD-15M (TIER 4 FINAL)
Voltage	24 V
Number of batteries	2
Battery capacity	950 CCA
Alternator rating	110A
Lights	10 total; cab mounted (side: 2 LH & 2 RH and 2 rear), 2 front lift cylinders and 2 rear fuel tank mounted



POWERTRAIN

TD-15M (TIER 4 FINAL)

Transmission	Single stage 14.6 in (370 mm) torque converter with a 2.3:1 stall ratio drives to transmission through a double universal joint. Modular, countershaft type power shift transmission, electro-hydraulic control. Preset travel speed and autoshift.		
Steering	Exclusive 2-speed geared steering module provides gradual turns while maintaining full power to both tracks plus conventional clutch-brake performance for tight or pivot turns. Coupled to 3-speed transmission, the 2-speed steering provides 6 speeds forward and 6 reverse. The left hand joystick controls transmission and steering drive for up and down shifting, steering, Hi/Lo selection and LH/RH gradual turn.		
Final drives	Double-reduction final drives mounted independently of track frames and dozer push arms for isolation from shock loads.		
Total ratio	12.1 to 1		
Maximum drawbar pull	106.11 lbf (472 kN)		
Travel Speeds	Forward	Reverse	
1st	Low	1.7 mph (2.8 km/h)	2.1 mph (3.3 km/h)
	High	2.4 mph (3.8 km/h)	2.8 mph (4.5 km/h)
2nd	Low	3.1 mph (5.0 km/h)	3.7 mph (6.0 km/h)
	High	4.2 mph (6.7 km/h)	5.0 mph (8.0 km/h)
3rd	Low	5.0 mph (8.0 km/h)	5.8 mph (9.3 km/h)
	High	6.5 mph (10.5 km/h)	7.6 mph (12.3 km/h)
Brakes Service	Spring applied hydraulically released multi-disc wet brakes. Foot pedal linkage control.		
Brakes Parking	The steering brakes also act as service and parking brakes. Service brakes are locked automatically when the transmission safety lever is actuated or when the engine is cut off.		

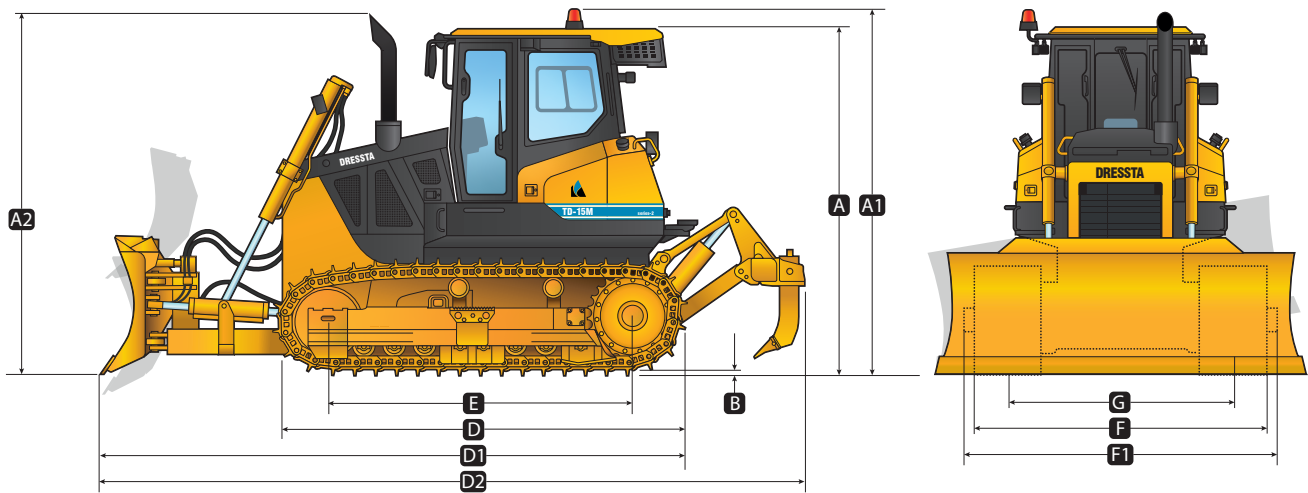
SERVICEABILITY

TD-15M (TIER 4 FINAL)

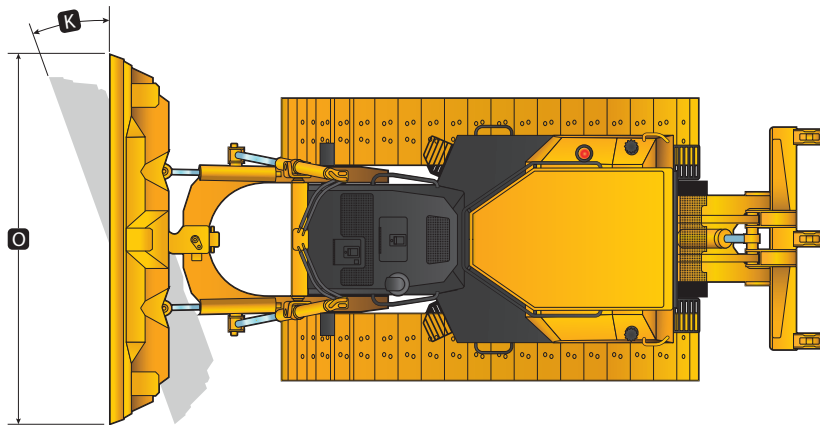
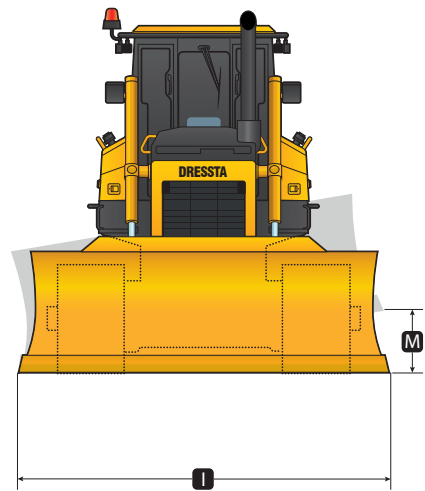
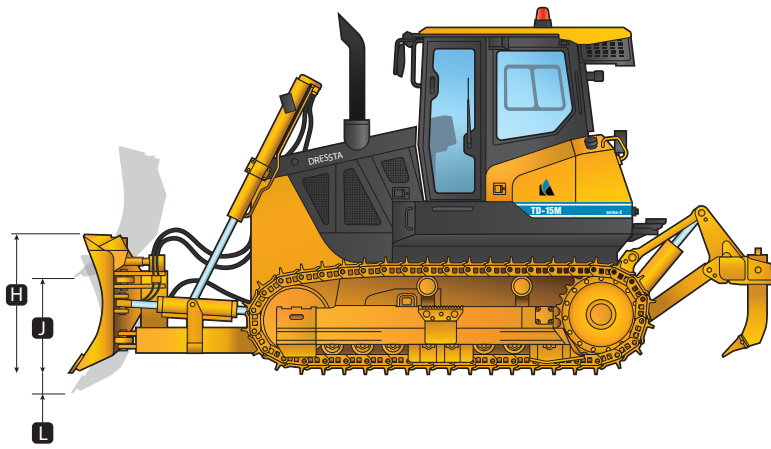
Refill capacities	
Fuel tank	110 gal (415 l)
Cooling system	7.1 gal (27 l)
Engine oil	4.9 gal (18.5 l)
Transmission system	40.4 gal (153 l)
Final drive, each side	10.6 gal (40 l)
Hydraulic reservoir	18.5 gal (70 l)
Diesel Exhaust Fluid (DEF) tank	12.2 gal (46 l)



DIMENSIONS	TD-15M (STD & LT)		TD-15M WT		TD-15M LGP	
	Semi-U	Angle	Semi-U	6-way	Straight	6-way
A: Overall height - Cab	11 ft 4 in (3450 mm)	11 ft 4 in (3450 mm)	11 ft 4 in (3450 mm)	11 ft 4 in (3450 mm)	11 ft 4 in (3450 mm)	11 ft 4 in (3450 mm)
A1: Overall height - Beacon	12 ft 11 in (3620 mm)	12 ft 11 in (3620 mm)	12 ft 11 in (3620 mm)	12 ft 11 in (3620 mm)	12 ft 11 in (3620 mm)	12 ft 11 in (3620 mm)
B: Grouser height	2.52 in (64 mm)	2.52 in (64 mm)	2.52 in (64 mm)	2.52 in (64 mm)	2.52 in (64 mm)	2.52 in (64 mm)
C: Ground clearance	17.5 in (445 mm)	17.5 in (445 mm)	17.5 in (445 mm)	17.5 in (445 mm)	17.5 in (445 mm)	17.5 in (445 mm)
D: Overall length - Base machine	STD 13 ft 3.3 in (4050 mm) LT 13 ft 10 in (4220 mm)	13 ft 10 in (4220 mm)	13 ft 10 in (4220 mm)	13 ft 10 in (4220 mm)	13 ft 10 in (4220 mm)	13 ft 10 in (4220 mm)
D1: Length with blade	STD 17 ft 2 in (5230 mm) LT 18 ft 7 in (5670 mm)	STD 17 ft 8 in (5390 mm) LT 19 ft 2 in (5830 mm)	18 ft 7 in (5670 mm)	18 ft 7 in (5670 mm)	18 ft 7 in (5670 mm)	18 ft 7 in (5670 mm)
D2: Length with blade and 1-shank / 3-shank ripper	STD 20 ft 6 in /21 ft 3 in (6250 mm/ 6480 mm) LT 22 ft 2 in/22 ft 8 in (6760 mm/ 6910 mm)	STD 6400 mm /6550 mm (21 ft /21 ft 6 in) LT 6840 mm /6990 mm (22 ft 5 in/22 ft 11 in)	22 ft 3 in/ 22 ft 9 in (6790 mm/ 6940 mm)	22 ft 3 in/ 22 ft 9 in (6790 mm/ 6940 mm)	-	-
E: Track length on ground	STD 104 in (2640 mm), LT 120 in (3050 mm)	120 in (3050 mm)	120 in (3050 mm)	120 in (3050 mm)	120 in (3050 mm)	120 in (3050 mm)
F: Width over track	96 in (2440 mm)	96 in (2440 mm)	110 in (2790 mm)	102 in (2590 mm)	122 in (3100 mm)	111 in (2820 mm)
F1: Width over trunnions	110.6 in (2810 mm)	110.6 in (2810 mm)	114.5 in (2910 mm)		131.5 in (3340 mm)	
G: Track gauge	76 in (1930 mm)	76 in (1930 mm)	80 in (2030 mm)	80 in (2030 mm)	85 in (2160 mm)	85 in (2160 mm)



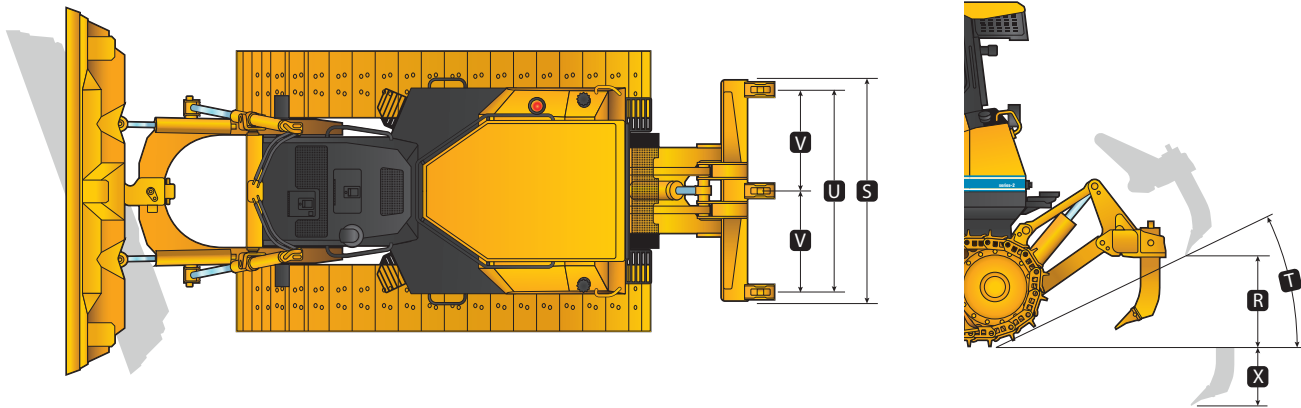
BLADE SPECS	TD-15M (STD & LT)		TD-15M WT		TD-15M LGP	
	Semi-U	Angle	Semi-U	6-way	Straight	6-way
SAE capacity	7.45 yd ³ (5.7 m ³)	5.0 yd ³ (3.8 m ³)	7.8 yd ³ (5.95 m ³)	5.0 yd ³ (3.8 m ³)	4.7 yd ³ (3.6 m ³)	5.2 yd ³ (4.0 m ³)
H: Blade height	4 ft 10 in (1460 mm)	3 ft 8 in (1120 mm)	4 ft 10 in (1460 mm)	4 ft 7 in (1360 mm)	43 in (1100 mm)	53.5 in (1360 mm)
I: Blade width / Folded Blade Width	11 ft 3 in (3440 mm)	13 ft 7 in (4130 mm)	11 ft 9 in (3590 mm)	12 ft 1 in (3680 mm) / 9 ft 1 in (2893 mm)	12 ft 1 in (3680 mm)	12 ft 7 in (3830 mm) / 9 ft 1 in (2893 mm)
J: Blade lift height	STD 43.5 in (1104 mm) LT 43.4 in (1102 mm)	STD 43.4 in (1102 mm) LT 44 in (1119 mm)	43.4 in (1102 mm)	50.4 in (1280 mm)	49 in (1240 mm)	50.4 in (1280 mm)
K: Blade angle	-	25 deg	-	23.5 deg	-	23.5 deg
L: Blade digging depth	18.2 in (463 mm)	STD 21.7 in (552 mm) LT 21.3 in (542 mm)	18.2 in (463 mm)	27 in (692 mm)	18 in (455 mm)	27 in (692 mm)
M: Maximum tilt	28.2 in (742 mm)	15.2 in (385 mm)	30.8 in (782 mm)	18 in (450 mm)	27.5 in (698 mm)	18.3 in (466 mm)
N: Maximum blade pitch adjustment	9 deg	-	9 deg	8 deg	10 deg	8 deg
O: Overall width with blade angled	-	12 ft 4 in (3750 mm)	-	STD 10 ft 11 in (3330 mm)	-	11 ft 6 in (3510 mm)



RIPPER

TD-15M

Type	Parallelogram ripper	
	Single-shank	Multi-shank (3-shank)
R: Maximum clearance under tip (raised)	19 in (485 mm)	17.9 in (455 mm)
S: Overall beam width	43 in (1100 mm)	88 in (2230 mm)
T: Slope angle (full raise)	25 deg	25 deg
U: Ripping width	-	6 ft 8 in (2030 mm)
V: Spacing center to center	-	3 ft 4 in (1015 mm)
X: Maximum penetration	28 in (713 mm)	24 in (600 mm)
Penetration force	15970 lb (71.04 kN)	14387 lb (64 kN)
Pryout force	87874 lb (390.9 kN)	60404 lb (268.7 kN)
Shank positions (vertical)	2	2
Weight of ripper incl. shank(s)	3408 lb (1546 kg)	3843 lb (1743 kg)
Weight of shank	434 lb (197 kg)	208 lb (94.5 kg)



OPERATING WEIGHTS

	TD-15M STD	TD-15M LT	TD-15M WT	TD-15M LGP
Base weight with Semi-U blade w/tilt, drawbar, standard equipment, Cab ROPS/FOPS, full fuel tank, and 175 lb (79 kg) operator	(Tier 4 Final)			
	STD 45660 lb (20710 kg)	LT 45990 lb (20860 kg)	47530 lb (21560 kg)	47780 lb (21670 kg)
Optional components				
Ripper				
Single-shank type	+ 3538 lb (1605 kg)	+ 3538 lb (1605 kg)	+ 3538 lb (1605 kg)	-
3-shank type	+ 3843 lb (1743 kg)	+ 3843 lb (1743 kg)	+ 3843 lb (1743 kg)	-
Track shoes				
20 in (508 mm)	-	-	-1933 lb (877 kg)	-
22 in (560 mm)	+ 276 lb (125 kg)	+ 304 lb (138 kg)	-1631 lb (740 kg)	-
24 in (610 mm)	+ 584 lb (265 kg)	+ 643 lb (292 kg)	-1290 lb (585 kg)	-
26 in (660 mm)	+ 895 lb (406 kg)	+ 985 lb (450 kg)	-948 lb (430 kg)	-2425 lb (1100 kg)



STANDARD EQUIPMENT

ENGINE

TD-15M (Stage V)

- Engine, Cummins B6.7, Tier 4 Final, emission certified, turbocharged, High Pressure Common Rail (HPCR), Singel Module™ DPF/SCR EGR-free, Electronic Controls (ECM), 232 hp (171 kW) net
- Air cleaner, Cummins Filtration Direct Flow™, dry type with precleaner, dust ejector system, exhaust aspiration and electronic service indicator
- Antifreeze, -34°F (-37°C)
- Brakes, foot, spring applied, hydraulically released
- Cooling module; includes radiator, transmission oil cooler, charge air cooler (CAC); isolation mounted
- Coolant filter conditioner
- Decelerator - right foot pedal and brake - center foot pedal
- Emergency brake release system
- Exhaust pipe extension with elbow
- Fan, hydraulically driven suction
- Filters, engine oil, full flow and by-pass with replaceable "spin-on" elements
- Water separator, fuel system

DRIVETRAIN

- Filters, power train, equipment hydraulics, "spin-on" micro glass type
- Steering, planetary type, 2 speed, left hand single lever control (joystick)
- Torque converter, single stage
- Transmission, power shift, 3 speeds forward, 3 reverse, combined with 2 speed steering provides 6 speeds forward, 6 reverse, preset travel speed selection and auto-downshift

OPERATOR'S ENVIRONMENT

- Air conditioner/heater/pressurizer/defroster, behind roof mounted
- AM/FM radio with Bluetooth® and USB socket
- Arm rests
- Cab, ROPS/FOPS integrated, sound suppression, 4 wipers w/washers, inside mirror, dome light, tinted safety glass, 2 sliding side windows, rear glass heated, air recirculation system (approved according to ROPS - EN ISO 3471 and FOPS - EN ISO 3449)
- Fire extinguisher
- First Aid Kit (DIN13164)
- Mirrors, 2 pcs, exterior
- Seat, air suspension type, fabric cover, adjustable, high back, straight fixed
- Seat belt (EN ISO 6683) - 3 in wide, retractable
- Sun visor for front cab window

UNDERCARRIAGE (STD)

- Track adjusters, hydraulic
- Track chain, sealed and lubricated (LTS) with split master link, 39 links
- Track chain end guides, integral
- Track frame, 6 roller, 76 in (1930 mm) gauge, oscillating type, lifespan lubricated rollers and idlers
- Track shoes, 20 in (508 mm) severe service

UNDERCARRIAGE (LT)

- Track adjusters, hydraulic
- Track chain, sealed and lubricated (LTS) with split master link, 43 links
- Track chain center guides
- Track chain end guides, integral
- Track frame, 8 roller, 76 in (1930 mm) gauge, oscillating type, lifespan lubricated rollers and idlers
- Track shoes, 20 in (508 mm) severe service

UNDERCARRIAGE (WT)

- Track adjusters, hydraulic
- Track chain, sealed and lubricated (LTS) with split master link, 43 links
- Track chain center guides
- Track chain end guides, integral
- Track frame, 8 roller, 80 in (2030 mm) gauge, oscillating type, lifespan lubricated rollers and idlers
- Track shoes, 30 in (762 mm) severe service

INSTRUMENTATION

- Electronic Monitoring System, LCD display
- Normal and diagnostic operating modes for engine and drive train, hourmeter, gear, range
- Gauges: voltmeter (battery charge), drive train oil temperature, fuel level, coolant temperature, tachometer (engine rpm), AdBlue® tank level (Stage V)
- Engine and drive train diagnostics program indicator lights
- Warning lights (Stage V): engine ECM status, high drive train oil temperature, low coolant level, low engine oil pressure, high coolant temperature, low fuel level, high exhaust system temperature, AdBlue® tank low level, battery charge level, low transmission/clutch oil pressure
- Warning lights - air cleaner filter, hydraulic oil filters, drive train pressure filter
- Audible alarm for low coolant level, low engine oil pressure, high coolant temperature

ELECTRICAL

- Alarm, back-up, white noise
- Alternator 110 A
- Dual batteries 12 V, 950 CCA, cold start, maintenance free
- Horn, electric
- Lights on cab, 4 cab side mounted - 2 RH & 2 LH; 2 rear, LED
- Lights with guards, LED, 2 front - lift cylinders mounted, 2 rear - fuel tank mounted
- Receptacle, starting/charging plug
- Starting, 24 V
- Starting aid - air grid heater

GUARDS

- Crankcase, hinged, with front pull hook, transmission, fan, radiator, sprocket rock and dirt deflector
- Engine hood, solid, sloped
- Engine side doors, hinged, perforated type
- Final drive seal guard
- Radiator guard door, louvered, hinged

UNDERCARRIAGE (LGP)

- Track adjusters, hydraulic
- Track chain, sealed and lubricated (LTS) with split master link, 43 links
- Track chain center guides
- Track chain end guides, integral
- Track frame, 8 roller, 85 in (2160 mm) gauge, oscillating type, lifespan lubricated rollers and idlers
- Track shoes, 37 in (940 mm) extreme clipped corner with bolt holes for 3rd rail track

HYDRAULIC CONTROLS

- Load sensing hydraulic system with variable-displacement multi-piston pump 3-spool valve, 1 lever with pilot operated blade control (lift/tilt), ready for ripper
- Trimble Basic

OTHER STANDARD EQUIPMENT

- Diagnostic centers for power train and equipment hydraulic pressures
- Ecological drains for engine oil, radiator coolant and hydraulic oil
- Hitch, retrieval
- Manuals, parts and operator's
- Maintenance tool kit (includes grease gun)
- Rear access platform
- Tools compartment
- Vandalism protection, one key for all locks



OPTIONAL EQUIPMENT

BLADE EQUIPMENT (STD & LT)

Semi-U: 7.45 yd³ (5.70 m³), complete with all blade components, includes hydraulic tilt and manual pitch or hydraulic tilt/pitch
Trimble Basic - brackets for masts on blade; no masts

Angle (manual angle): 5.0 yd³ (3.8 m³), complete with all blade components, includes heavy duty struts, with or without hydraulic tilt
Trimble Basic - brackets for masts on blade; no masts

BLADE EQUIPMENT (WT)

Semi-U: 7.78 yd³ (5.95 m³), complete with all blade components, includes hydraulic tilt and manual pitch or hydraulic tilt/pitch
Trimble Basic - brackets for masts on blade; no masts

Angle (6-way): 5.0 yd³ (3.8 m³), full hydraulic, inside arm with hydraulic tilt and angle and manual pitch, complete with all blade components and steps on track frame
Trimble Basic - brackets for masts on blade; no masts

BLADE EQUIPMENT (LGP)

Straight: 4.7 yd³ (3.6 m³), complete with all blade components, includes hydraulic tilt and manual pitch
Trimble Basic - brackets for masts on blade; no masts

Angle (6-way): 5.2 yd³ (4.0 m³), full hydraulic, inside arm with hydraulic tilt and angle and manual pitch, complete with all blade components and steps on track frame
Trimble Basic - brackets for masts on blade; no masts

REAR MOUNTED EQUIPMENT (STD & LT)(WT)

- Fixed drawbar, replaces the standard retrieval hitch
- Ripper, multi-shank beam, with three shanks, partially mounted
- Ripper, single-shank beam, with shank, partially mounted

REAR MOUNTED EQUIPMENT (LGP)

Drawbar with counterweight

TRACK SHOES (STD)

- 22 in (560 mm) shoes, severe service
- 24 in (610 mm) shoes, severe service
- 26 in (660 mm) shoes, severe service

TRACK SHOES (WT)

- 20 in (508 mm) shoes, square corner, severe service
- 22 in (560 mm) shoes, square corner, severe service
- 24 in (610 mm) shoes, square corner, severe service
- 26 in (660 mm) shoes, square corner, severe service

TRACK SHOES (LT)

- 22 in (560 mm) shoes, square corner, severe service
- 24 in (610 mm) shoes, square corner, severe service
- 26 in (660 mm) shoes, square corner, severe service

TRACK SHOES (LGP)

- 26 in (660 mm) shoes, square corner, severe service
- Std 37 in (940 mm) shoes with third rail track system (adds half chain assembly to outer ends of 37 in shoes)

OPERATOR'S ENVIRONMENT

For use with cab:

- Air recirculation system with MSHA filters, severe service
- Heated mirrors, 2 pcs, exterior
- Seat, heated, air suspension type, fabric cover, adjustable, high back (includes empty seat sensor and belt sensor)
- Sun visors (2), additional, for side door windows

ELECTRICAL

- Additional cab lights, 2 front, LED
- Additional tractor lights, 2 front, lift cylinder mounted, LED
- Additional lights, 2 rear, under A/C mounted, LED

GUARDS

- Electrical winch for engine crankcase guard
- Engine hood, perforated
- Final drive rock guard
- Track roller guard, full length
- Transmission and engine crankcase guards, severe service crankcase guard with front pull hook
- Tank guard, bolted (0.5 in plate protects fuel tank and hydraulic reservoir)

SCREENS

- Sweeps, forestry, front and rear, for standard cab
- Include guard for fuel tank and hydraulic reservoir
- Screens for cab windows (front, side, doors, no rear) hinged, black painted
- Screen for rear cab window hinged, black painted
- Screens for tractor lights (2 front, 2 rear)
- Screens for additional 2 front cab lights

ADDITIONAL OPTIONS

- Air precleaner, turbine type (Enginaire), (sandy & dusty operating conditions)
- Centralized Lubricating System (For machine without or with ripper)
- Fast fill - fuel tank
- Fan, reversible (sandy & dusty operating conditions)
- Inspection lamp, 12 V, portable, with cable
- Sound suppression package, for use with std solid hood or with perforated hood
- Starting/charging receptacle plug assembly
- 1000 h maintenance package (filters)
- 2000 h maintenance package (filters)

EXPORT PACKING

- Export packing, drive on/drive off, machine on the trailer
- Export packing, drive on/drive off, machine on the railway wagon

At Dressta we take pride in innovating to help our customers achieve more in the jobs they do. Our dedicated team of application engineers can customize designs, modify standard equipment and adapt attachments for peak performance in specific application tasks, improving productivity and bottom line results.

Do you have a Special Feature Request? See how Dressta can help you achieve more in the jobs you do.

