

# 890H

## WHEEL LOADER

### Engine

Cummins QSG12 Tier 4 Final

### Gross Power

370 hp (276 kW)

### Operating Weight

68,540 lb (31,089 kg)

### Bucket Size

7.1 yd<sup>3</sup> (5.5 m<sup>3</sup>)



TOUGH WORLD. TOUGH EQUIPMENT.

# 890H SPECIFICATIONS >>>

## ENGINE

Emissions regulation	Tier 4 Final / Stage IV
Make	Cummins
Model	QSG12
Max gross power	370 hp (276 kW) @ 2,100 rpm
Max net power	352 hp (262 kW) @ 2,100 rpm
Peak torque	1,248 lb-ft (1,693 N-m) @ 1,400 rpm
Displacement	720 in <sup>3</sup> (11.8 L)
Number of cylinders	6
Aspiration	Turbocharged & Air-to-air intercooled

## TRANSMISSION STANDARD

Transmission type	Countershaft, power shift
Torque converter	Single-stage, three-element
Maximum travel speed, fwd	23.7 mph (38.1 km/h)
Maximum travel speed, rev	16.5 mph (26.5 km/h)
Number of speeds, fwd	4
Number of speeds, rev	3

## AXLES

Differential front type	Hydraulic lock
Differential rear type	Conventional
Axle oscillation	± 11°

## STEERING

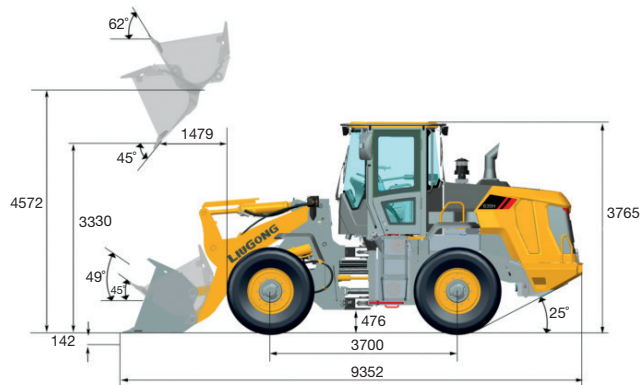
Steering configuration	Articulated
Steering pressure	3,002 psi (20.7 MPa)

## BRAKES

Service brake type	Wet discs, two independent circuits
Service brake actuation	Hydraulic
Parking brake type	Mechanical control
Parking brake actuation	Hydraulic

## HYDRAULIC SYSTEM

Main pump type	Piston
System pressure	3,771 psi (26 MPa)
Raise	6.0 s
Dump time	1.6 s
Float down time	3.4 s
Total cycle time	11.0 s



## LOADER ARM PERFORMANCE WITH ATTACHMENT

Tipping load - straight	52,642 lb (23,878 kg)
Tipping load - full turn	45,415 lb (20,600 kg)
Bucket breakout force	55,078 lbf (245 kN)
Maximum hinge pin height	15 ft 0 in (4,572 mm)
Dump clearance at full height discharge	10 ft 11 in (3,330 mm)
Dump reach at full height discharge	4 ft 10 in (1,479 mm)
Maximum digging depth, bucket level	6 in (142 mm)
Bucket rollback at ground level	45°
Bucket rollback at carry	49°
Bucket rollback at maximum height	62°
Maximum dump angle at full height	45°

## BUCKET PERFORMANCE

Bucket capacity	7.1 yd <sup>3</sup> (5.5 m <sup>3</sup> )
-----------------	---

## DIMENSIONS

Ground clearance	18 in (476 mm)
Wheelbase	12 ft 2 in (3,700 mm)
Cab height	12 ft 4 in (3,765 mm)
Wheel tread	7 ft 11 in (2,420 mm)
Width over tires	10 ft 5 in (3,170 mm)
Length with bucket down	30 ft 8 in (9,352 mm)
Turn angle, either side	38°
Rear angle of departure	25°
Turning radius, bucket carry	25 ft 4 in (7,725 mm)
Turning radius, outside of tire	23 ft 0 in (7,011 mm)
Width over bucket	11 ft 4 in (3,440 mm)

## TIRES

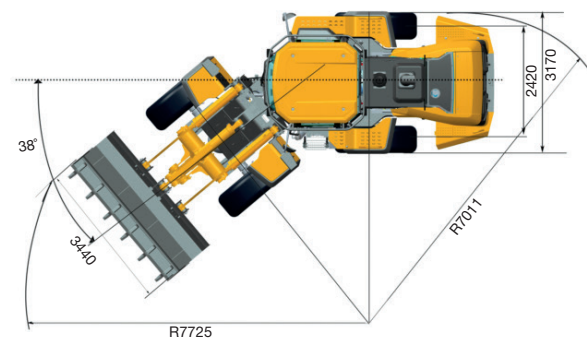
Tire size	29.5R25 L3 tire
-----------	-----------------

## OPERATING WEIGHTS

Operating weight	68,540 lb (31,089 kg)
------------------	-----------------------

## SERVICE CAPACITY

Fuel tank	128.1 gal (485 L)
Engine oil	9.2 gal (35 L)
Cooling system	11.8 gal (45 L)
Hydraulic system	67.3 gal (255 L)
Transmission	13.2 gal (50 L)
Axles, each	17.1 gal (65 L)
DEF tank	13.2 gal (50 L)



LiuGong Construction Machinery N.A., LLC

22220 Merchants Way, Suite 100, Katy, Texas 77449  
 T: (281) 579-8882 F: (281) 579-8388  
 www.liugongna.com

01/2020 Designed by LiuGong

Specifications and designs are subject to change without notice. Machines shown may include optional equipment.