

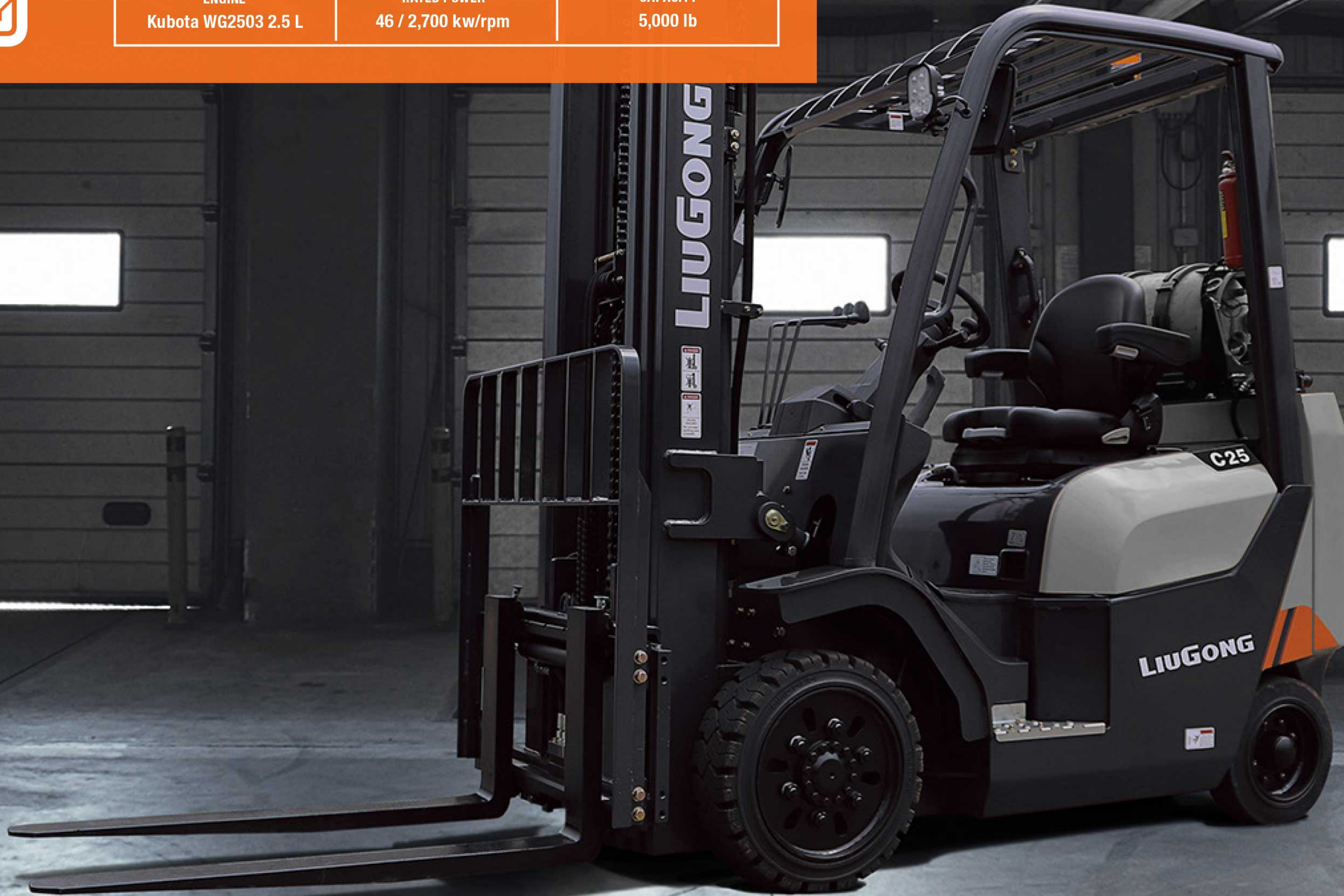
# 2025G-C

3-SERIES FORKLIFT

ENGINE  
Kubota WG2503 2.5 L

RATED POWER  
46 / 2,700 kw/rpm

CAPACITY  
5,000 lb



# SPECIFICATIONS

## GENERAL

Power type	2	LPG
Base capacity	3	5,000 lb
Load center	4	24 in

## WEIGHTS

Service weight	5	unloaded	8,140 lb
Axle load	6	loaded / unloaded, front	11,867 / 2,849 lb
	7	loaded / unloaded, rear	1,773 / 5,291 lb

## TIRES

Tire type	8	Cushion	
Wheels	9	front / rear	2 / 2
Wheelbase	10	58.5 in	
Tire size	11	front	21 × 7-15
	12	rear	16 × 5 × 10-1/2
Tread width	13	front / rear	35.0 / 36.2 in

## MAST

Max. fork height	14	with std 2-stage mast	118.1 in
Free lift	15	with std 2-stage mast	5.5 in
Height, upright lowered	16	with std 2-stage mast	83.9 in
Height, upright extended	17	with std 2-stage mast	161.3 in
Mast tilt, fwd, back	18	with std 2-stage mast	6° / 12°
Carriage	19	width	36.2 in
Fork spread	20	minimum / maximum	8.7 / 34.7 in
Fork dimensions	21	T x W x L	1.6 x 4.8 x 42.1 in

## CHASSIS

Length to fork face	22	with std 2-stage mast	94.1 in
Overall width	23	43.3 in	
Overhead guard height	24	83.5 in	
Turning radius	25	minimum outside	76.8 in
Fork overhang	26	with std 2-stage mast	16.7 in
Right angle stack	27	add load length and clearance	143.7 in
Ground clearance	28	minimum loaded	3.5 in
	29	center of wheelbase	5.5 in

## Performance

Travel speed	30	loaded / unloaded	17 / 17.5 km/h
Lift speed	31	loaded / unloaded	0.60 / 0.65 m/s
Lower speed	32	loaded / unloaded	0.50 / 0.50 m/s
Max. drawbar pull	33	loaded	4,400 lb
Max. gradeability	34	loaded / unloaded	35 / 22 %

## Systems

Brakes	35	service	Foot / hyd
	36	parking	Hand / mech
Engine	37	manufacturer	Kubota
	38	model	WG2503
	39	emission compliance	EPA 4F
	40	cylinders	4
	41	displacement	2.5 liter
	42	rated power	46 / 2,700 kw/rpm
	43	max. torque	168 / 1,600 N.m/rpm

