

**LIUGONG**  
NORTH AMERICA

# CLG-2450H

REACH STACKER

| ENGINE         | OPERATING WEIGHT    | GROSS POWER    | MAX LIFTING HEIGHT |
|----------------|---------------------|----------------|--------------------|
| Cummins<br>X12 | 164,400<br>74,500kg | 355hp<br>265kW | 49.5 FT            |



# SPECIFICATIONS

## GENERAL

|                |                        |  |  |
|----------------|------------------------|--|--|
| Model          | CLG2450H               |  |  |
| Power type     | Diesel                 |  |  |
| Rated capacity | 99,210 lb (45,000) kg  |  |  |
| Service Weight | 164,244 lb (74,500) kg |  |  |

## CAPACITY

|                     |       |   |  |
|---------------------|-------|---|--|
| Extend Distance /   | Row 1 | 77.3 / 45 (8' 6" / 9' 6" 4 layer), 43 (5 layer)         |  |
| Max.Capacity (in/t) | Row 2 | 150.1 / 32 (8' 6" / 9' 6" 4 layer) , 30 (8' 6" 5 layer) |  |
|                     | Row 3 | 248.6 / 16 (8' 6" / 9' 6" 3 layer), 14 (8' 6" 4 layer)  |  |

## DIMENSIONS

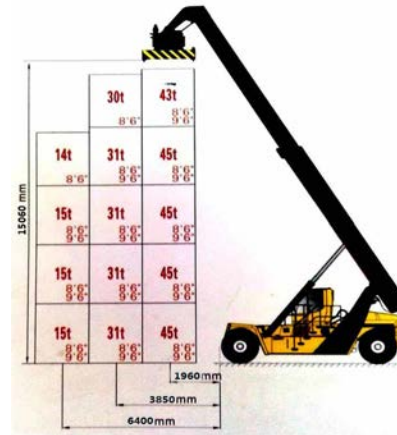
|                                  |   |                 |  |
|----------------------------------|---|-----------------|--|
| Max. Lifting Height              | 49 ft 5 in                              |                 |  |
| Max. Elevation Angle of Lazy Arm | A                                       | 59 deg          |  |
| Overall Length                   | B                                       | 38ft 3 in       |  |
| Overall Width                    | C (at retracted spreader/ front wheels) | 238 in / 164 in |  |
| Overall Height                   | 188 in                                  |                 |  |
| Wheelbase                        | F                                       | 256 in          |  |
| Tread Width (front / rear)       | D/E                                     | 119 in / 111 in |  |
| Turning Radius                   | 334.6 in                                |                 |  |
| Ground Clearance                 | G                                       | 13.8 in         |  |

## PERFORMANCE

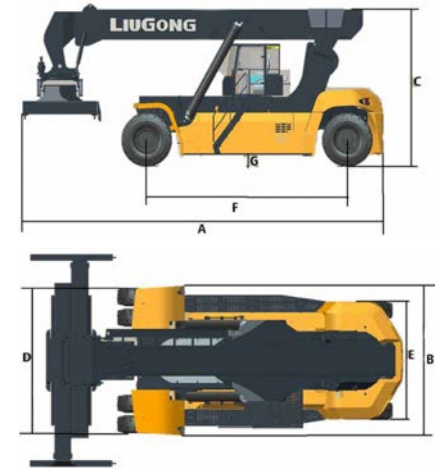
|                                       |                   |  |  |
|---------------------------------------|-------------------|--|--|
| Travel Speed (unloaded/loaded)        | 16.8mph / 14.2mph |  |  |
| Max. Gradeability / Max. Drawbar Pull | 39.5% / 328 kN    |  |  |

## SYSTEM

|                           |                        |  |  |
|---------------------------|------------------------|--|--|
| Engine Manufacturer       | Cummins                |  |  |
| Model                     | X12                    |  |  |
| Type                      | Electronic injection   |  |  |
| Displacement              | 11 Liter               |  |  |
| Rated Power               | 355hp/2,000rpm         |  |  |
| Max. Torque               | 1,373 ft lb/1,400      |  |  |
| Transmission Manufacturer | ZF                     |  |  |
| Transmission Model        | 5WG261                 |  |  |
| Type                      | Hydraulic transmission |  |  |
| Control Type              | Powershift             |  |  |
| Gears (Front/Rear)        | 5/3                    |  |  |



EXCLUSIVELY FOR DEALER



# STANDARD CONFIGURATION

- Engine Electronic Control
- Electric proportional temperature control water cooling system
- Brake oil radiator
- Hydraulic drive (with torque converter)
- Gear output clutch
- Electric control shift
- Automatic gear shifting
- CAN-Bus Communication
- No wheel rim
- Control valve electric proportional servo control
- Control valve balance control
- Electric proportional temperature control hydraulic oil cooling
- Reverse Sensor
- Steering wheel position display
- Steering lights automatically turn-off
- Cold and warm air conditioner
- Overload protection
- Slope lifting prohibition
- Steering wheel protection
- Turning speed-limit

LGNA-2450-ENG-U

The LiuGong series of logos herein, including but not limited to word marks, device marks, letter of alphabet marks and combination marks, as the registered trademarks of Guangxi LiuGong Group Co., Ltd. are used by Guangxi LiuGong Machinery Co., Ltd. with legal permission, and shall not be used without permission. Specifications and designs are subject to change without notice. Illustrations and pictures may include optional equipment and may not include all standard equipment. Equipment and options vary by regional availability.

LiuGong Construction Machinery N.A., LLC.

22220 Merchants Way - Suite 100  
Katy, Texas 77449  
USA

www.LiuGongna.com